



# City Performance Monitor (CPM)



European  
Commission

Horizon 2020  
European Union funding  
for Research & Innovation

This project has received funding from the European Union's Horizon 2020 research and innovation programme under Grant Agreement No. 730052 | **Topic: SCC-2-2016-2017: Smart Cities and Communities Nature based solutions**

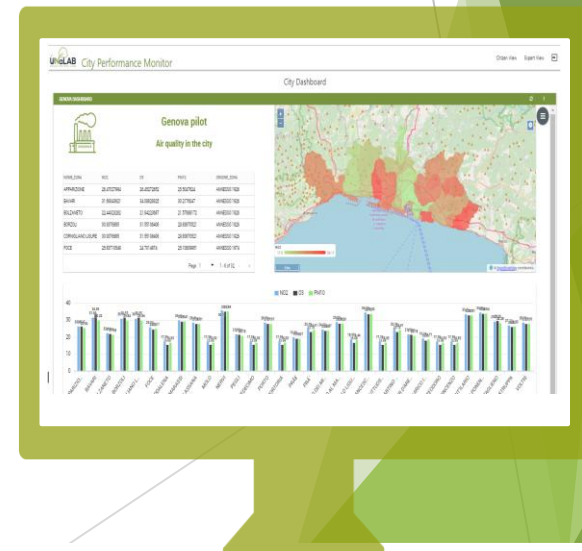
# The City Performance Monitor

## City Performance Monitor (CPM)

provides graphical features to manage and visualize performance indicators related to the urban conditions and the social and environmental impact of the NBS.

*CPM enables the data-driven decision making exploiting actual measures and urban data sources*

[http://unalab.eng.it/cpm\\_v2/](http://unalab.eng.it/cpm_v2/)



## Benefits ensured by the CPM



- **Transparency** - performance indicators are publicly accessible and findable. Managers and decision makers can provide evidence about the impact and benefits derived by the implemented solutions.



- **Objectiveness** - measures and KPI leverage the the actual measures coming from the urban data sources (i.e., IOT sensors devices).



bottom-up

- **Social impact** - improves the stakeholder awareness about the current conditions allowing the participatory definition, monitoring and evaluation of the NBSs.



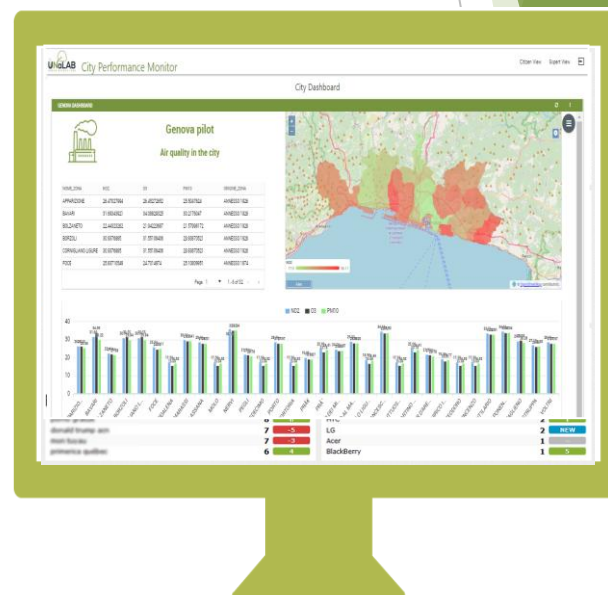
- **Understandability** -dashboards with charts and maps facilitate the understanding of scientific knowledge and historical trends.

# The City Performance Monitor

CPM will help the stakeholders to focus on the information that they really need:

- urban conditions
- status of the implemented NBS solutions
- potential problems, disruptions and lacks of resources
- indicator values on a map of the city

- But they can also proactively:
- Highlight the unanswered questions
- Identify future strategical objectives



# The City Performance Monitor

## Target users



**ULL Managers** are facilitated on creating, setting up and updating the KPI using data sources and manual input values.



**Citizens** can see the KPI to monitor the the real effectiveness of the implemented solutions.



# The City Performance Monitor

Live demo!

[http://unalab.eng.it/cpm\\_v2/](http://unalab.eng.it/cpm_v2/)

- ▶ Participants explore NBS performance using CPM and open discussion

[http://unalab.eng.it/cpm\\_v2/](http://unalab.eng.it/cpm_v2/)

- ▶ Note: some of the KPI are using not actual measures



